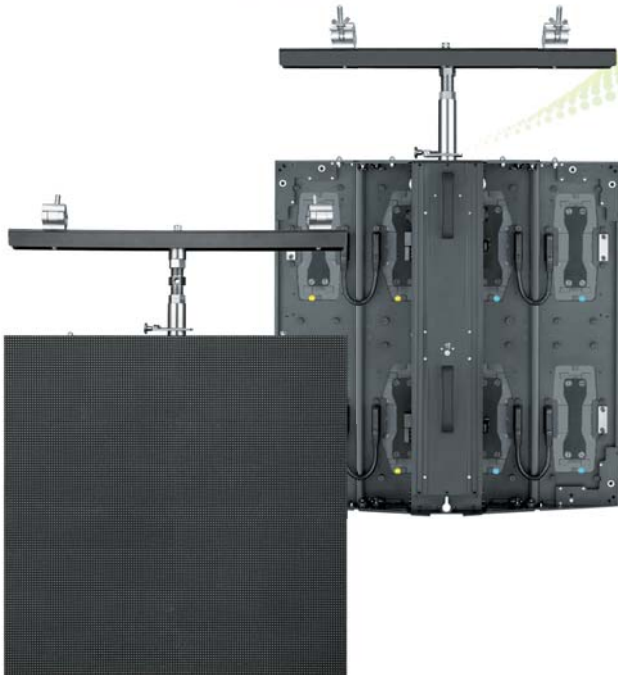
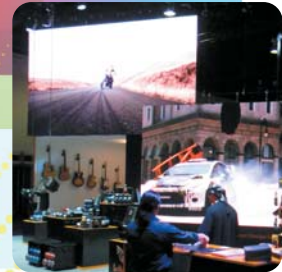




FOREGROUND
SIMPLY BRILLIANT



mamboLED[™]

Strong, Compact & Smart Modular Display
with KWIK-Connect[™] Technology & Ultimate Rigging Flexibility



mamboLED™

Strong, Compact & Smart Modular Display
with KWIK-Connect™ System & Ultimate Rigging Flexibility



**CROSS-RENTABILITY
ADVANTAGE**
MIX & MATCH FLEXIBILITY

Foreground **mamboLED™** allows you to configure panels with various pixel pitch from 4mm indoor to 32mm** outdoor all in one screen! This means greater flexibility in rigging as well as a leaner inventory because you can use similar display structure, mechanism and share accessories.

**RIG & CLICK
INSTALLATION**
QUICK & EASY

Foreground **mamboLED™** is designed with the LED screen rental industry in mind. Its patented KWIK-Connect™ system includes a king pin and Allen key click prelock mechanism to make panel connection faster and more secure. The system also comes with an adjustable hanging bracket that makes panel height adjustment a breeze compared to the conventional way of rigging screens.

**SLIMLINE
& LIGHTWEIGHT**
TOUGH & STRONG

Foreground **mamboLED™** comes with slimline and lightweight cabinets that are made of heavy duty aluminum laser cut to precision. They are designed with easy and speedy rigging in mind. Seamless display coupled with robust circuitry and component assembly, these panels are built to withstand frequent handling and are ready to perform even in harsh environments.

**Pro-SMT II
TECHNOLOGY**
HI-TECH COATING

Foreground **mamboLED™** outdoor series come with Pro-SMT II, a technology utilizing a highly durable coating to protect surface mounted LEDs from moisture and UV harm. This high-tech coating not only makes a smoother and flatter surface protection possible, it also effectively reduces glare and enhances the LED's contrast.

**>1.2 kHz
HI-REFRESH RATE**
STATIC & FLICKER-FREE

With high refresh rates of more than 1,200 Hz, **Foreground mamboLED™** is a broadcast-ready display providing static and flicker-free video images for video recording and live video feeds.

**PIX-LEVEL
CALIBRATION**
BRIGHT & COLORFUL

Corrects and configures the display to achieve the best possible visual appearance in terms of luminance (brightness) and colour uniformity, ensuring its performance level is maximized throughout the display life.

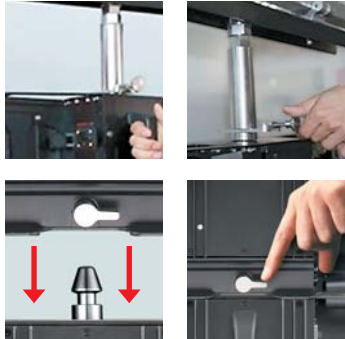
**HT+70™
HI-TEMPERATURE**
OPERABILITY & EFFICIENCY

Supported by an energy efficient system that is rated to withstand high operating temperatures up to +70°C and consumes less power. A 'green' feature that reduces impact on the environment whilst saving you money.

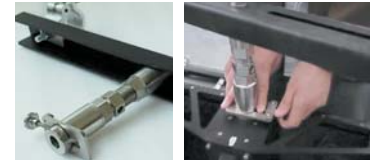
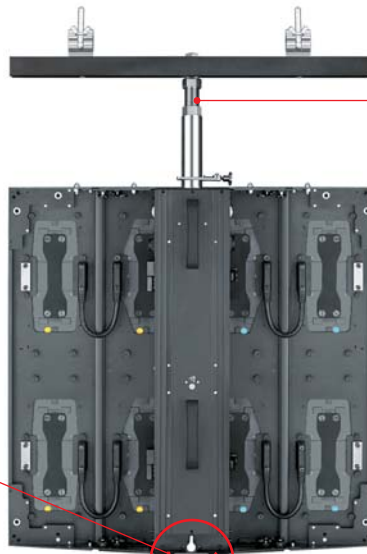
Designed and built with the rental industry in mind. Your Mambo advantages...



rigging options



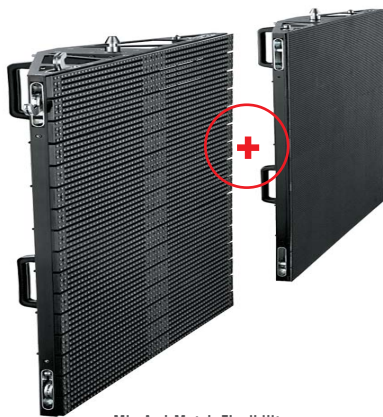
"Rig and Click" Vertical Interconnect
Our unique King Pin locking system allows fast and effortless vertical panel connection in a simple 3-step process: align, lift and click & lock



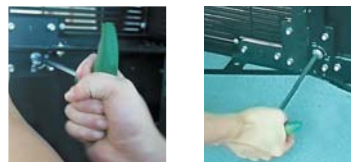
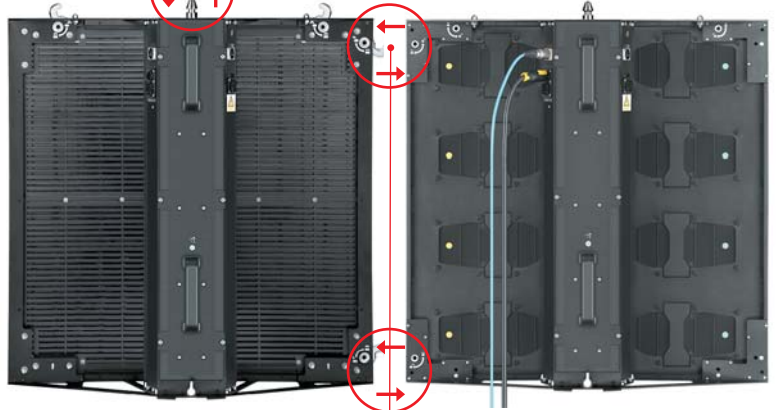
Easy Top Mounting
An adjustable hanging bracket with clamps facilitates secure and easy mounting to truss or structure



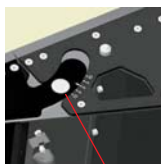
Hassle-Free Alignment
Adjustment of panels from top down is much easier and more accurate than aligning the panels from bottom



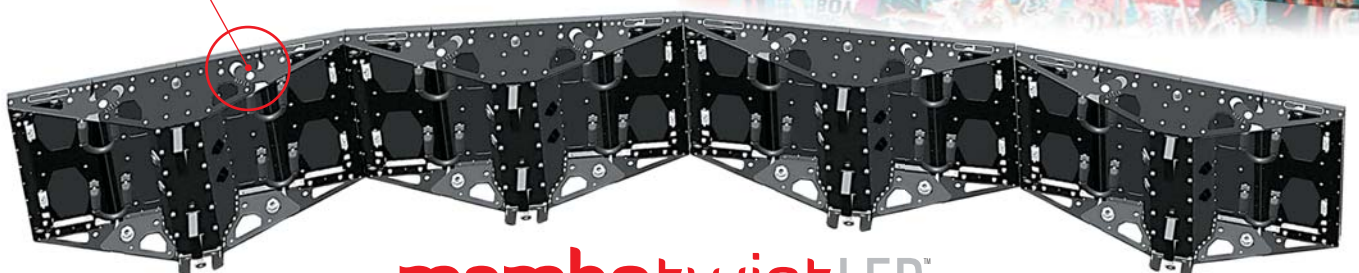
Mix And Match Flexibility
Configure panels with various pixel pitch from 4mm indoor up to 32mm** outdoor all in one screen



Quick Horizontal Interconnect
Align the panels and slightly push them into place until they snap before tightening them with an Allen key



Curve Set-Up
Our unique Mambo Twist™ mechanism coupled with KWIK-Connect™ lock assembly enables easy creation of convex or concave curved walls with various angles from 4m in diameter



mambotwistLED™
Smart, Modular & Curved Display

Black LED
Enhanced Contrast
and Visual Performance

High Refresh Rates
More than 1,200 Hz
to provide static and
flicker free display for
TV camera recording

Pix-Level Calibration
Calibratable brightness
and colour uniformity



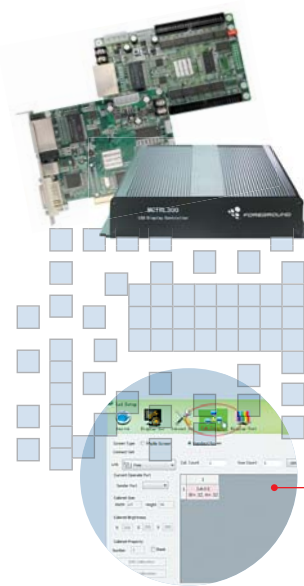
Stable Signal Transmission
44 pins connector and bridge board
are used instead of ribbon cable
enabling more reliable and
steadier signal transmission



Pro-SMT II
Hi-tech coating to serve as
a smoother and flatter LED
protection as well as
glare reduction and
contrast enhancement

Aluminum Cabinet
2.5mm thick metal
Slim profile and
lightweight

Square Module
Symmetric design can be
used horizontally
and vertically



Advanced Image Processing Platform
Foreground's powerful image control system
includes a digitizer, receiver card and user-friendly
Fore-G System Management Software for fast,
trouble free set-up and configuration

- Allowing total control of your display content at a simple mouse click
- Acceptance of a multitude of data and video sources
- Compatibility with all resolutions and aspect ratios
- Scaling/compressing capability

Fore-G System Management Software
Forward compatible Windows based set-up
software provides easy to navigate environment
and is packed with diagnostic features like
Failure Notification, Thermostatic Monitoring,
Data Transmission Verification, etc

- Seamless connection between panels
- Hot swappable panels
- Wide and optimized viewing angle
- Fanless design enables silent and maintenance-free operation



Mambo Twist Curved Set-Up Mechanism*
Spice up your imaging landscape via convex
or concave curved video walls with
angles between 10° and -10°
diameter: from 4m

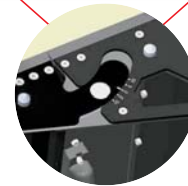
**"Rig & Click" Prelock
Mechanism and King Pin**
Easy and quick assembling



Rear Accessibility
Easy faulty module replacement
from the rear even when
the display is running



Control Unit
Cleaner design with fewer cables
reduces failure rate and increases
reliability as well as allowing it to
be opened while the
tile is operating



Lockable Door with Hinges
Control unit housing with
hinged door enables
easy access



Test Button
Allows RGBW preview
testing without connecting
to any PC or external
data source



Captive Panel Screw
Screws are snapped into
position by thumb pressure
thus easy module replacement
without complete removal
of screws



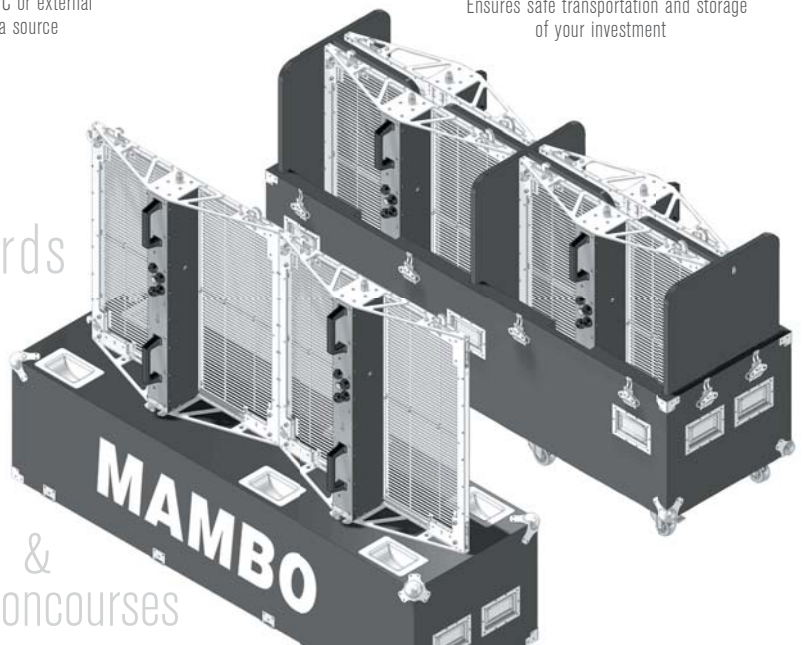
Knob Latch
Easy turn and lock action
allows faster vertical
panel connection

Tough And Rugged Flight Cases
Ensures safe transportation and storage
of your investment



Ergonomically Placed Handle
Easy setup by a single person

billboards
arenas
auditoriums
shopping malls
stadiums
squares &
concourses



mamboLED™



Material Parameters	Mambo-4	Mambo-6	Mambo-8	Mambo-9.6	Mambo-12	Mambo-16
Pixel Pitch	4.8 mm	6.0 mm	8.0 mm	9.6 mm	12.0 mm	16.0 mm
Pixel Matrix Per Tile	80 x 40	64 x 32	48 x 24	40 x 20	32 x 16	24 x 12
Pixels Per Tile	3,200	2,048	1,152	800	512	288
Pixel Density	40,403 /m ²	27,777 /m ²	15,625 /m ²	10,851 /m ²	6,944 /m ²	3,906 /m ²
Module Size (mm)	384 x 192	384 x 192	384 x 192	384 x 192	384 x 192	384 x 192
Recommended Minimum Viewing Distance	> 4.8 m	> 6 m	> 8 m	> 9.6 m	> 12 m	> 15 m
Brightness	≥ 1,200 cd/m ²		≥ 6,000 cd/m ²		≥ 6,000 cd/m ²	≥ 5,500 cd/m ²
Colour Temperature	5,000° – 9,000° K		5,000° – 9,000° K		5,000° – 9,000° K	
Contrast Ratio	3,000 : 1		2,200 : 1		2,200 : 1	
Viewing Angle Horizontal & Vertical (50% Brightness)	140° (+20° / -20°)		140° (+20° / -20°)		140° (+20° / -20°)	
Panel Weight	17.8 kg per panel		18.5 kg per panel		18 kg per panel	
Panel Dimensions (Width x Height X Depth)	768 mm x 768 mm x 114 mm		768 mm x 768 mm x 114 mm		768 mm x 768 mm x 114 mm	
Panel Area	0.589 sq.m.		0.589 sq.m.		0.589 sq.m.	
Panel Material	Aluminum		Aluminum		Aluminum	
Ingress Protection (Front/Rear)	IP40 / IP65		IP65 / IP65		IP65 / IP65	
Operating Temperature Range	-10°C to + 70°C		-20°C to + 70°C		-20°C to + 70°C	
Operating Humidity Range	20% to 90% RH		20% to 90% RH		20% to 90% RH	
Pixel Type and Configuration (R/G/B)	SMD 3 in 1 3528		SMD 3 in 1 3535		SMD 3 in 1 3535	
Colours	281 trillion		281 trillion		281 trillion	
Grey Scale (Linear)	16 bits x RGB		16 bits x RGB		16 bits x RGB	
Brightness Control	100 levels		100 levels		100 levels	
Processing Depth	16 bits (65,536 levels)		16 bits (65,536 levels)		16 bits (65,536 levels)	
Video Frame Rate	50 Hertz – 85 Hertz		50 Hertz – 85 Hertz		50 Hertz – 85 Hertz	
Display Refresh Rate	>1,200 Hertz		>1,200 Hertz		>1,200 Hertz	
Drive Mode	1:16 multiplex	1:8 multiplex	1:4 multiplex		Static Drive	
Input Voltage (Nominal)	110 VAC / 220 VAC ± 10%		110 VAC / 220 VAC ± 10%		110 VAC / 220 VAC ± 10%	
Input Power Frequency	47 Hertz / 63 Hertz		47 Hertz / 63 Hertz		47 Hertz / 63 Hertz	
Input Power (Max)	≤480 Watts/panel		≤400 Watts/panel		≤550 Watts/panel	
Input Power (Ave.)	≤120 Watts/panel		≤170 Watts/panel		≤170 Watts/panel	
Lifetime (50% Brightness)	≥100,000 Hours		≥100,000 Hours		≥100,000 Hours	
Application	Indoor		Indoor / Outdoor		Indoor / Outdoor Mesh	
Compliance						


Features and specifications are subject to change without prior notice.

* Please specify when placing order. ** 24 mm and 32 mm pixel pitch available upon request. Terms and conditions apply.



Material Parameters	Mambo-4	Mambo-6	Mambo-6 Plus
Pixel Pitch	4 mm	6 mm	6.85 mm
Pixel Matrix Per Tile	96x48	64x32	56x28
Pixels Per Tile	4,608	2,048	1,568
Pixel Density	62,270/m ²	27,676/m ²	21,289/m ²
Module Size (mm)	384 x 192	384 x 192	384 x 192
Recommended Minimum Viewing Distance	>4 m	>6 m	>7 m
Brightness	≥6,000 cd/m ²	≥6,000 cd/m ²	≥6,000 cd/m ²
Colour Temperature	5,000° — 9,000° K	5,000° — 9,000° K	5,000° — 9,000° K
Contrast Ratio	2,200 : 1	2,200 : 1	2,200 : 1
Viewing Angle Horizontal & Vertical (50% Brightness)	140° (+20° / -20°)	140° (+20° / -20°)	140° (+20° / -20°)
Panel Weight (per m ²)	31kg/m ²	31kg/m ²	31kg/m ²
Panel Dimensions (Width x Height X Depth)	768 mm x 768 mm x 114 mm	768 mm x 768 mm x 114 mm	768 mm x 768 mm x 114 mm
Panel Area	0.589 sq.m.	0.589 sq.m.	0.589 sq.m.
Panel Material	Aluminum	Aluminum	Aluminum
Ingress Protection (Front/Rear)	IP 65 / IP 54	IP 65 / IP 54	IP 65 / IP 54
Operating Temperature Range	-20°C to + 50°C	-20°C to + 50°C	-20°C to + 50°C
Operating Humidity Range	20% to 90% RH	20% to 90% RH	20% to 90% RH
Pixel Type and Configuration (R/G/B)	Water Proof SMT LEDs	Water Proof SMT LEDs	Water Proof SMT LEDs
Colours	281 trillion	281 trillion	281 trillion
Grey Scale (Linear)	12-16bits x RGB	12-16bits x RGB	12-16bits x RGB
Brightness Control	100 levels	100 levels	100 levels
Processing Depth	16 bits (65,536 levels)	16 bits (65,536 levels)	16 bits (65,536 levels)
Video Frame Rate	50 Hertz — 85 Hertz	50 Hertz — 85 Hertz	50 Hertz — 85 Hertz
Display Refresh Rate	>1,200 Hertz	>1,200 Hertz	>1,200 Hertz
Drive Mode	1:8 multiplex	1:8 multiplex	1:8 multiplex
Input Voltage (Nominal)	110 VAC / 220 VAC ± 10%	110 VAC / 220 VAC ± 10%	110 VAC / 220 VAC ± 10%
Input Power Frequency	47 Hertz / 63 Hertz	47 Hertz / 63 Hertz	47 Hertz / 63 Hertz
Input Power (Max)	≤400 Watts/panel	≤400 Watts/panel	≤400 Watts/panel
Input Power (Ave.)	≤170 Watts/panel	≤170 Watts/panel	≤170 Watts/panel
Lifetime (50% Brightness)	≥100,000 Hours	≥100,000 Hours	≥100,000 Hours
Application	Indoor / Outdoor	Indoor / Outdoor	Indoor / Outdoor
Compliance			

Features and specifications are subject to change without prior notice. *Please specify when placing order. *

Complies with the essential standard/requirements of: 

FOREGROUND DISPLAY LIMITED

Block A, 2nd Floor, Fenda Hi -Tech Zone, Sanwei Xixiang, Baoan, Shenzhen, China. 518126

Tel: +86 755 2748 6628 ·

Fax: +86 755 2748 6328 ·

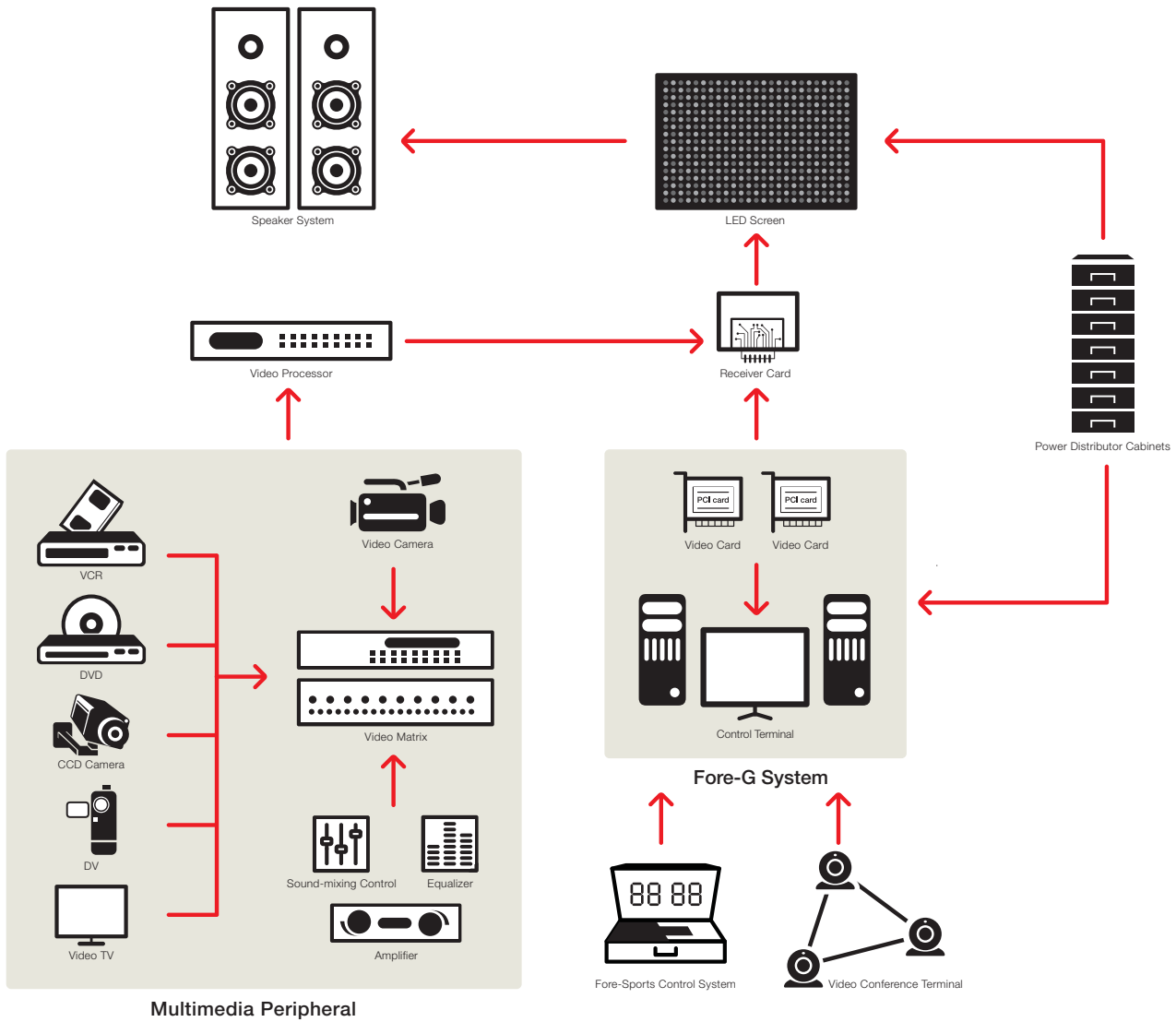
E-Mail: sales@foreground.cc

www.foreground.cc



FOREGROUND

Network Multimedia System Connections



ACCESSORIES



Main Data Cable
• Length: 15 m



Data Interconnect Cable
• Length: 1.0 m



Main Power Cable
• Length: 15 m
• Support up to 10 cabinets



Power Interconnect Cable
• Length: 1.0 m



LED External Sending Box



Adjustable Hanging Bracket*
• 2mm heavy-duty gauge aluminum bar
• Support up to 14 cabinets
• 7mm slot for adjusting the shackle and hex nut



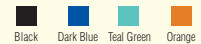
T-shaped Hex Wrench



Adjustable Floor Mounting*
• Lightweight, strong and sturdy floor stand
• 576mm X 550mm X 3,222mm
• Holds up to 4 cabinets vertically



Flight Case
• Capacity: 0.8 m³
(Holds up to 4 cabinets)
• Weight: 185 KG
(Flight case + 4 cabinets)
• Available in 4 colour choices



* Non-standard accessories are available as separately orderable items to complement our LED display solutions



Complies with the essential standard/requirements of:



FOREGROUND DISPLAY LIMITED

Block A, 2nd Floor, Fenda Hi-Tech Zone, Sanwei Xixiang, Baoan, Shenzhen, China. 518126

Tel: +86 755 2748 6628 • Fax: +86 755 2748 6328 • E-Mail: sales@foreground.cc

www.foreground.cc

The information on this brochure is subject to FOREGROUND Display Limited copyright. No material from this brochure can be used in any context (including copying, modifying or transmitting) of the content of this brochure requires the prior written permission of FOREGROUND Display Limited. All images used in the brochure are for illustrative purposes only.